

Figure 6.5: - The penetration profile for a 2mm overlay (sample A in Tables 6.2 and 6.3). As each subsequent bead is deposited a new peak in the penetration profile is created. Deposition proceeded from right to left.

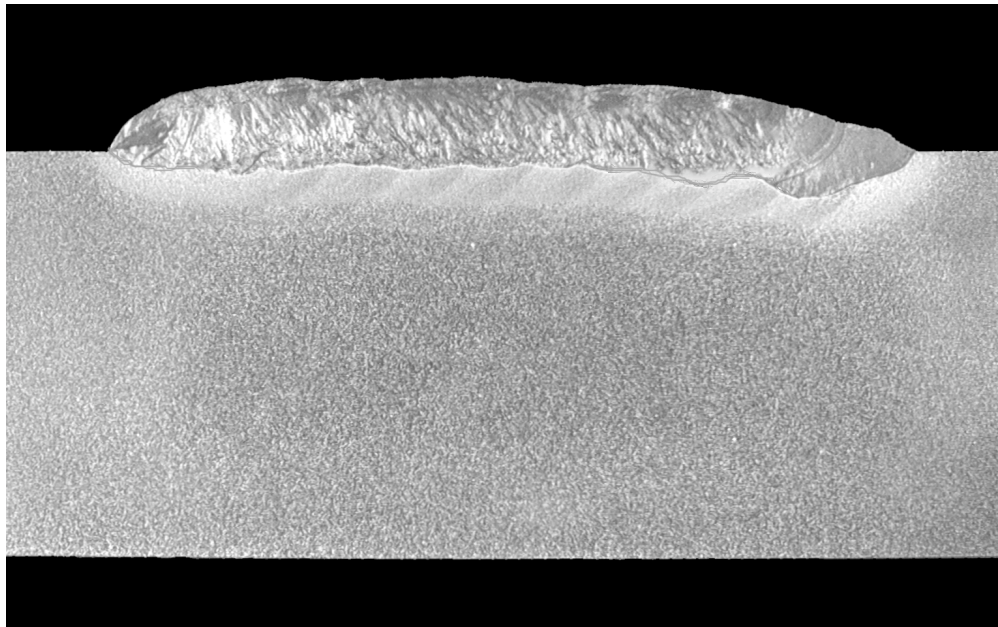


Figure 6.6: - The penetration profile for a 4mm overlay with high bead overlap (sample E in Tables 6.2 and 6.3). In this case the individual penetration peaks are not clearly visible. Deposition proceeded from right to left, and it can be seen that the penetration of the first bead is higher than the steady-state penetration of the overlay.